

An Empirical Approach to CVE

White House Summit on Countering Violent Extremism

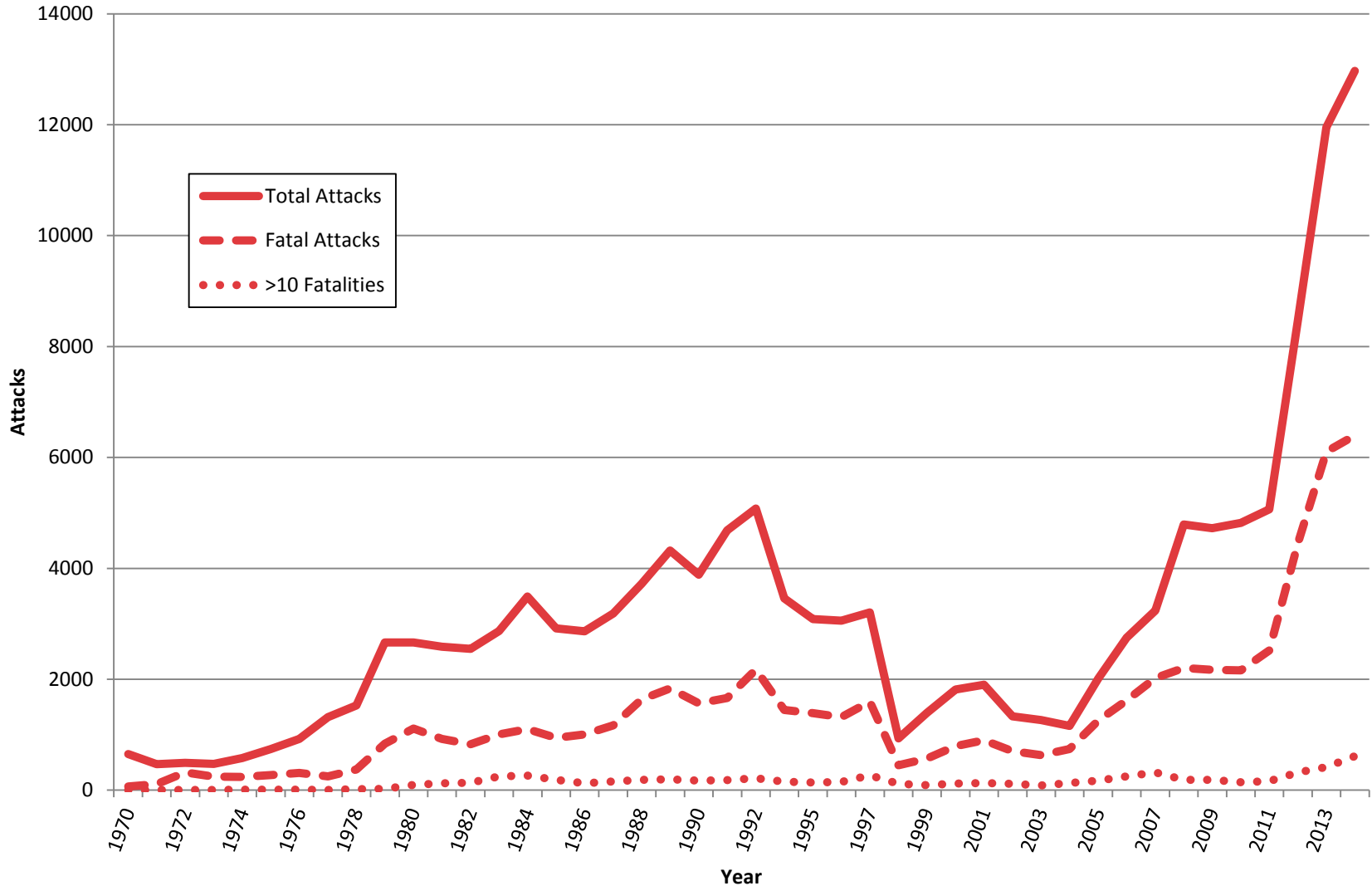
William Braniff

Executive Director, START

February 18, 2015

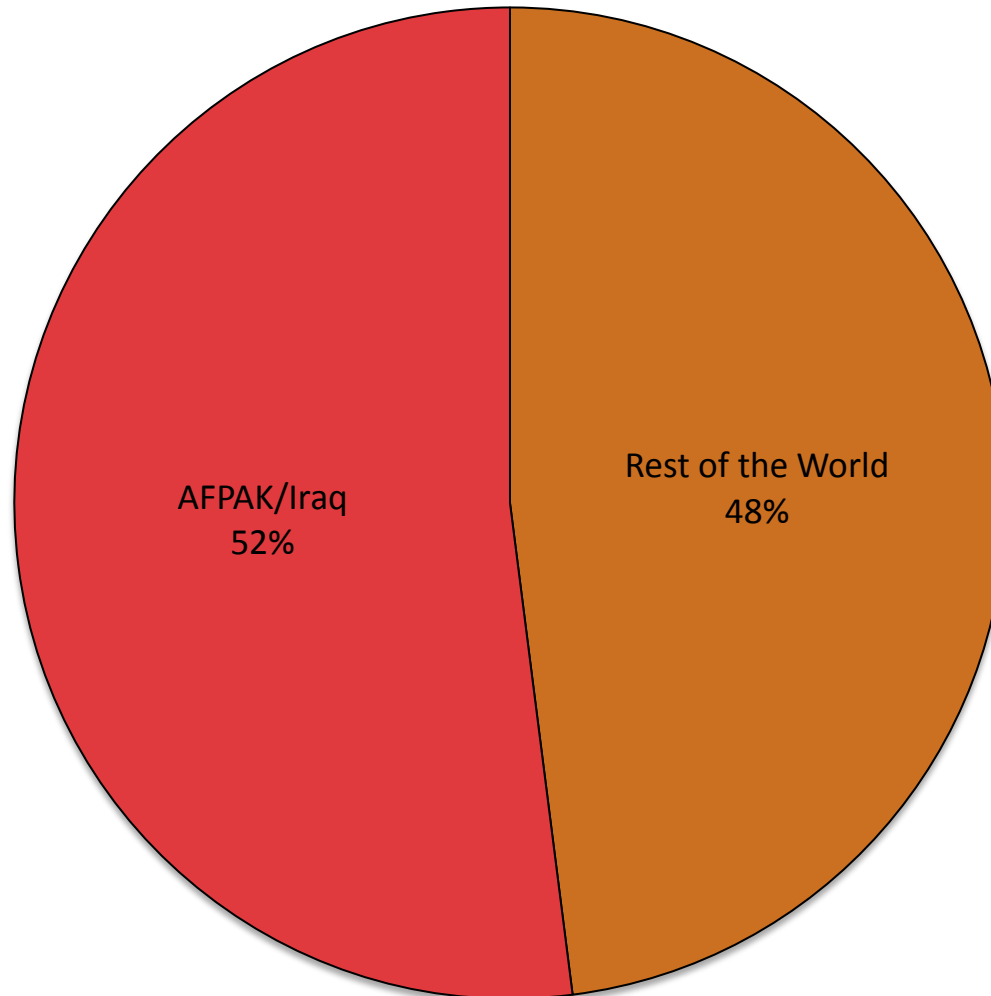
This research was supported by the U.S. Department of Homeland Security (DHS) Science and Technology Directorate and the National Institute of Justice through START. Any opinions, findings, conclusions or recommendations presented here are solely the authors' and are not representative of DHS or the United States Government.

Worldwide Terrorism, 1970-2014*



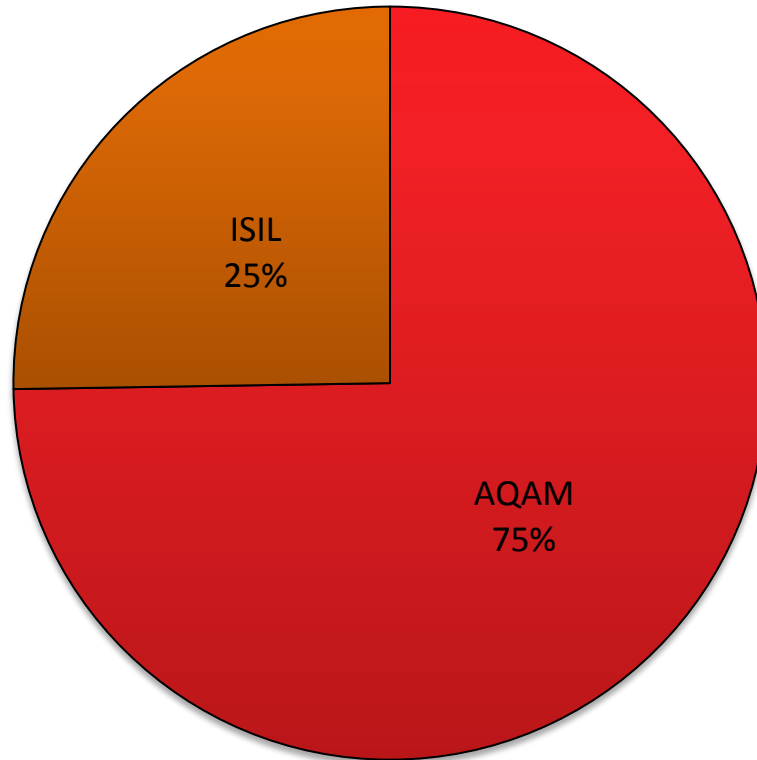
* 2014 is partial-year data (January- September)

Terrorist Attacks, 2012-2014*



*Through September, 2014

Al-Qa`ida and Affiliated Movements (AQAM): Attacks, 2012-2014*



AQAM:

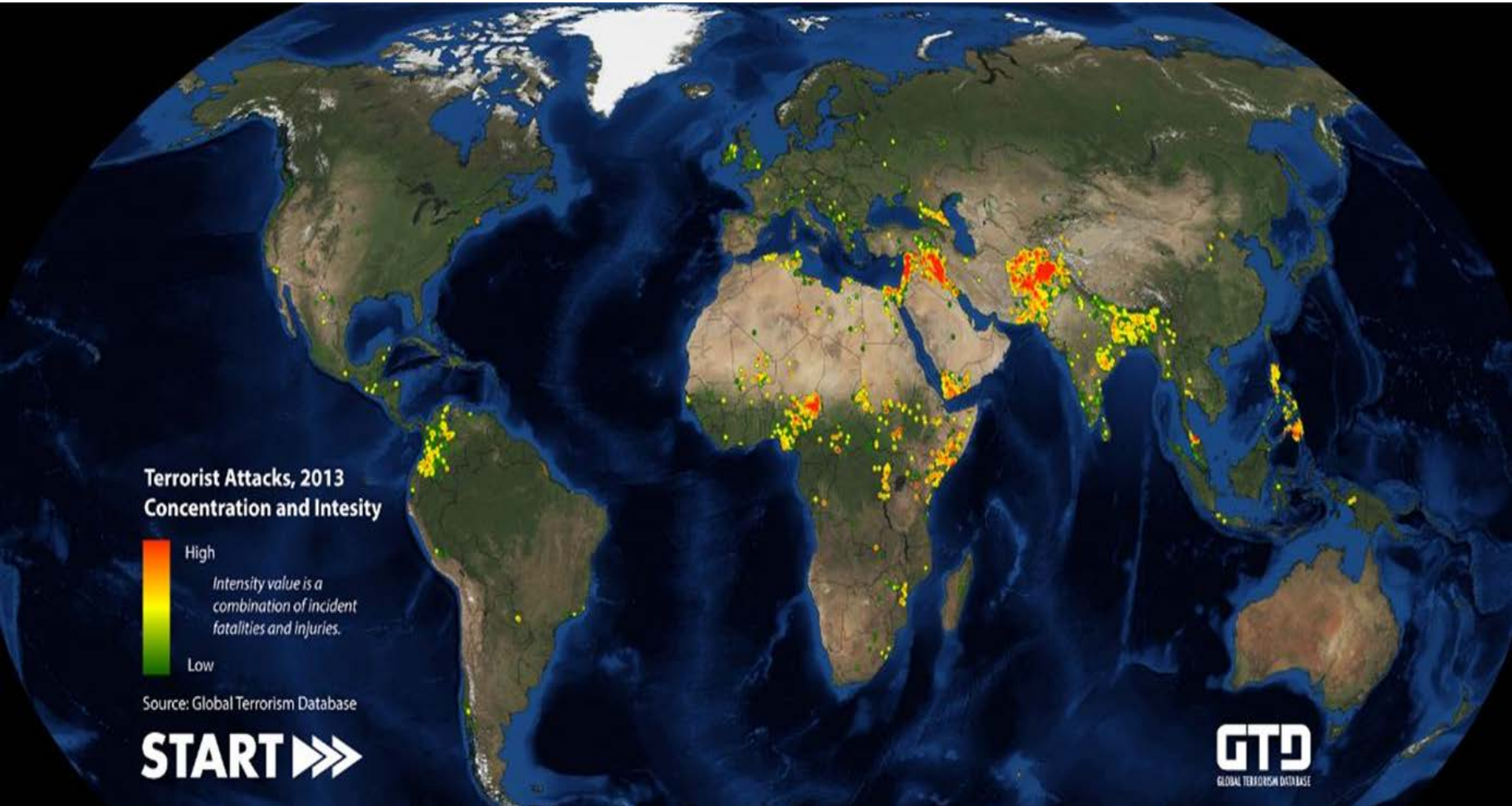
- Abu Sayyaf Group
- Al-Nusrah Front
- Al-Qa`ida in the Arabian Peninsula
- Al-Qa`ida in the Indian Subcontinent

- Al-Qa`ida in the Islamic Maghreb
- Al-Shabaab
- Ansar Al-Sharia (Libya)
- Ansar Al-Sharia (Tunisia)
- Islamic Movement of Uzbekistan

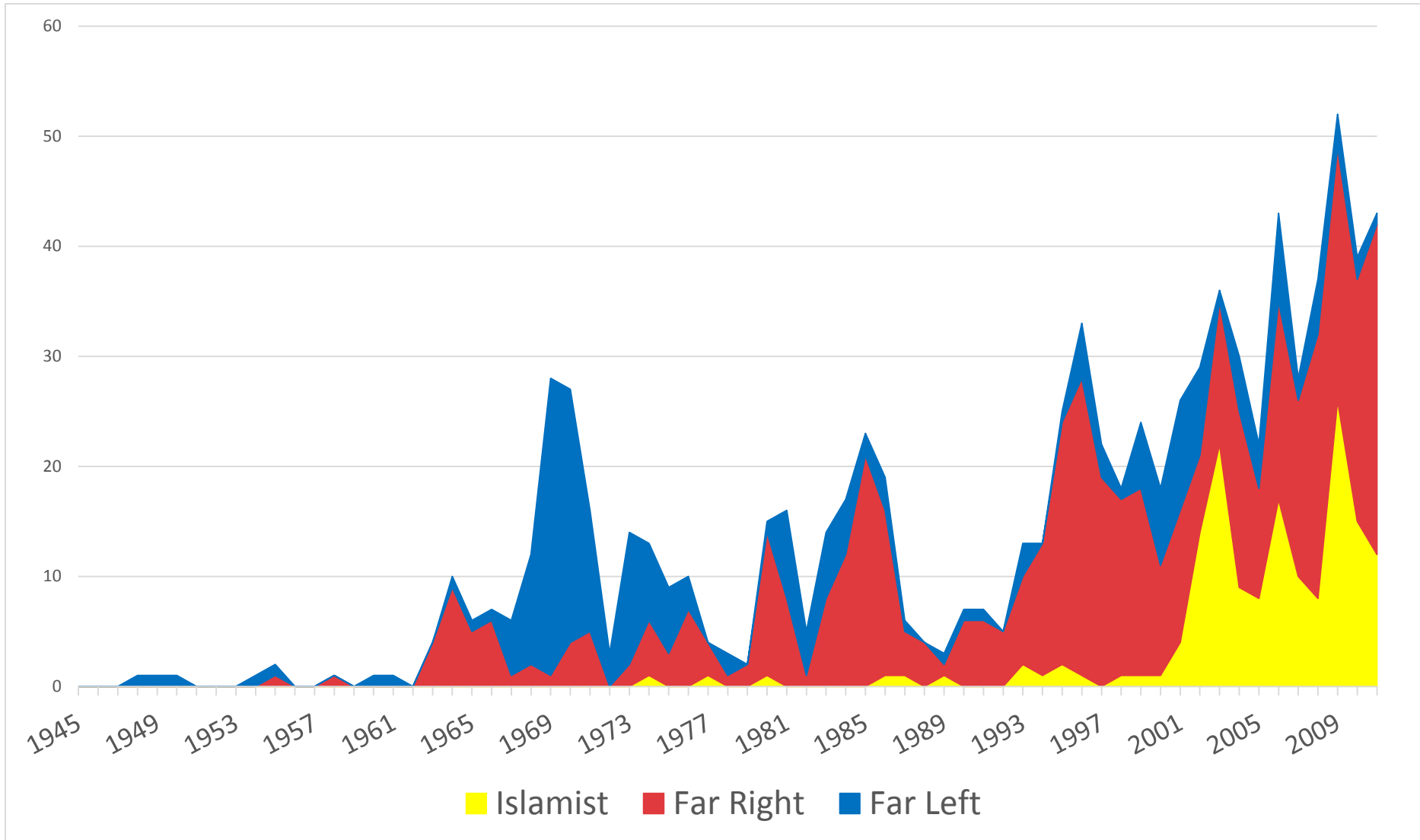
- Islamic State of Iraq and the Levant
- Jemaah Islamiya
- Lashkar-e-Taiba
- Taliban
- Tehrik-i-Taliban Pakistan

*Through September, 2014

Terrorism Hot Spots



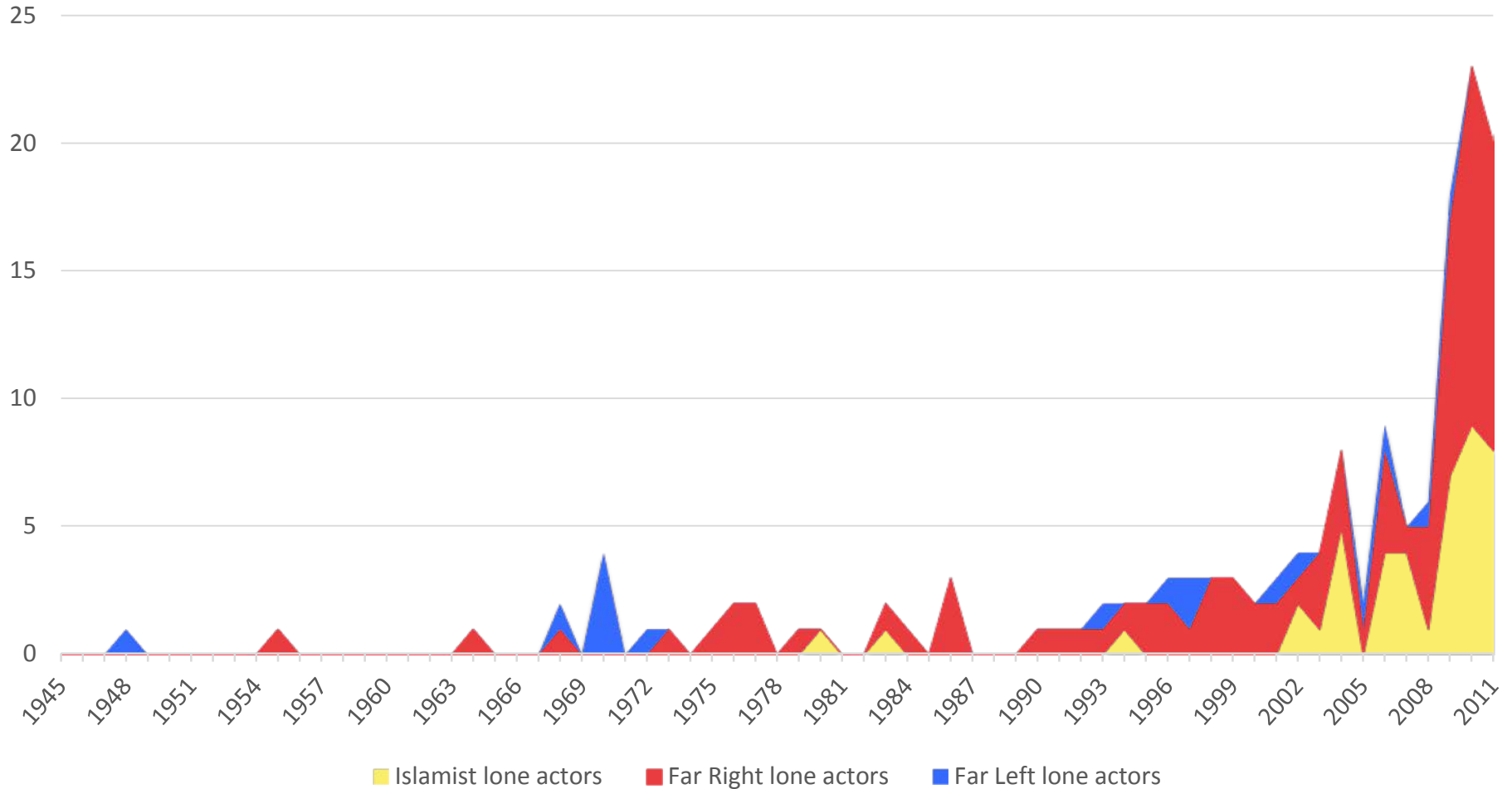
Radicalization over time



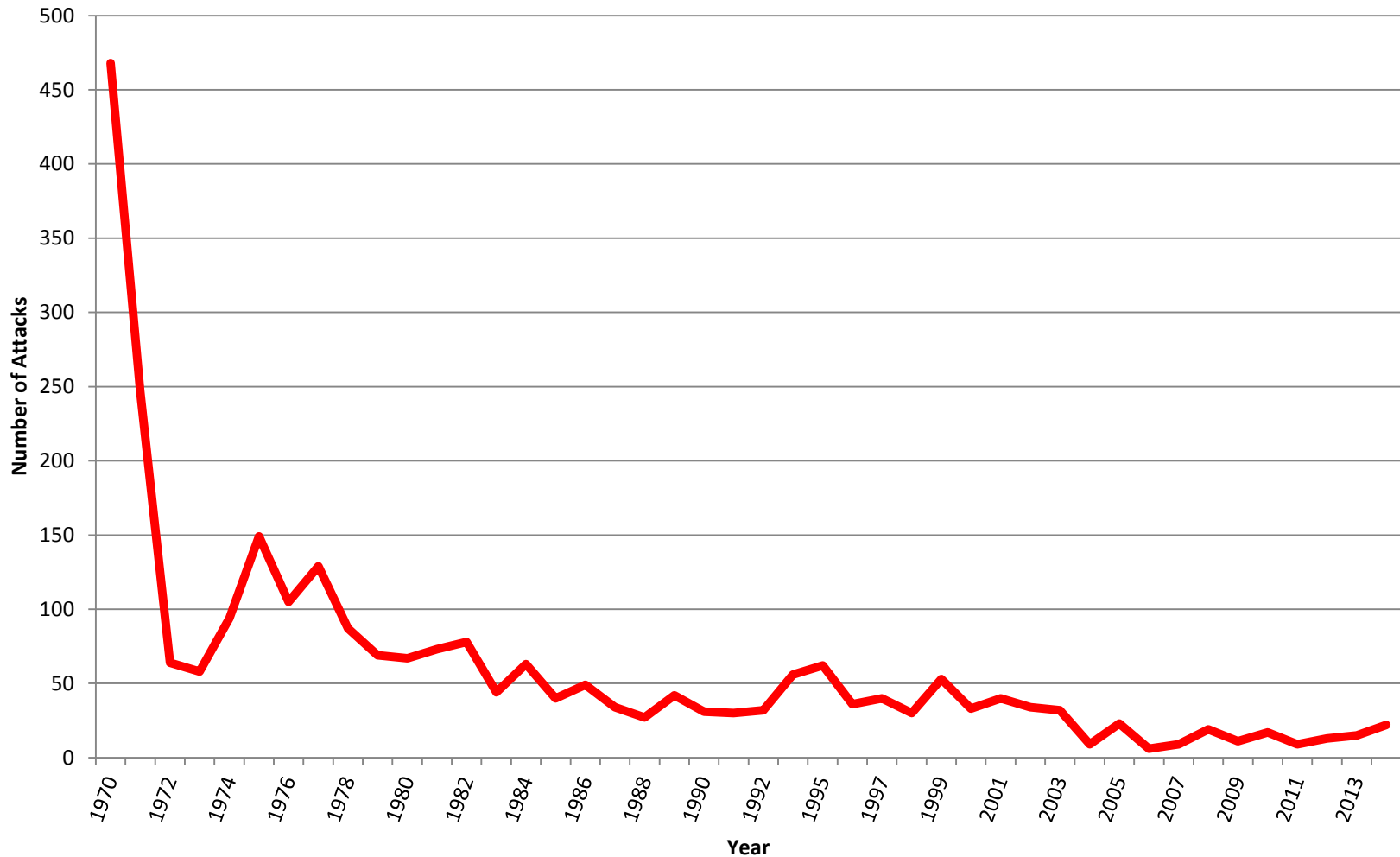
Multiple Radicalization Pathways



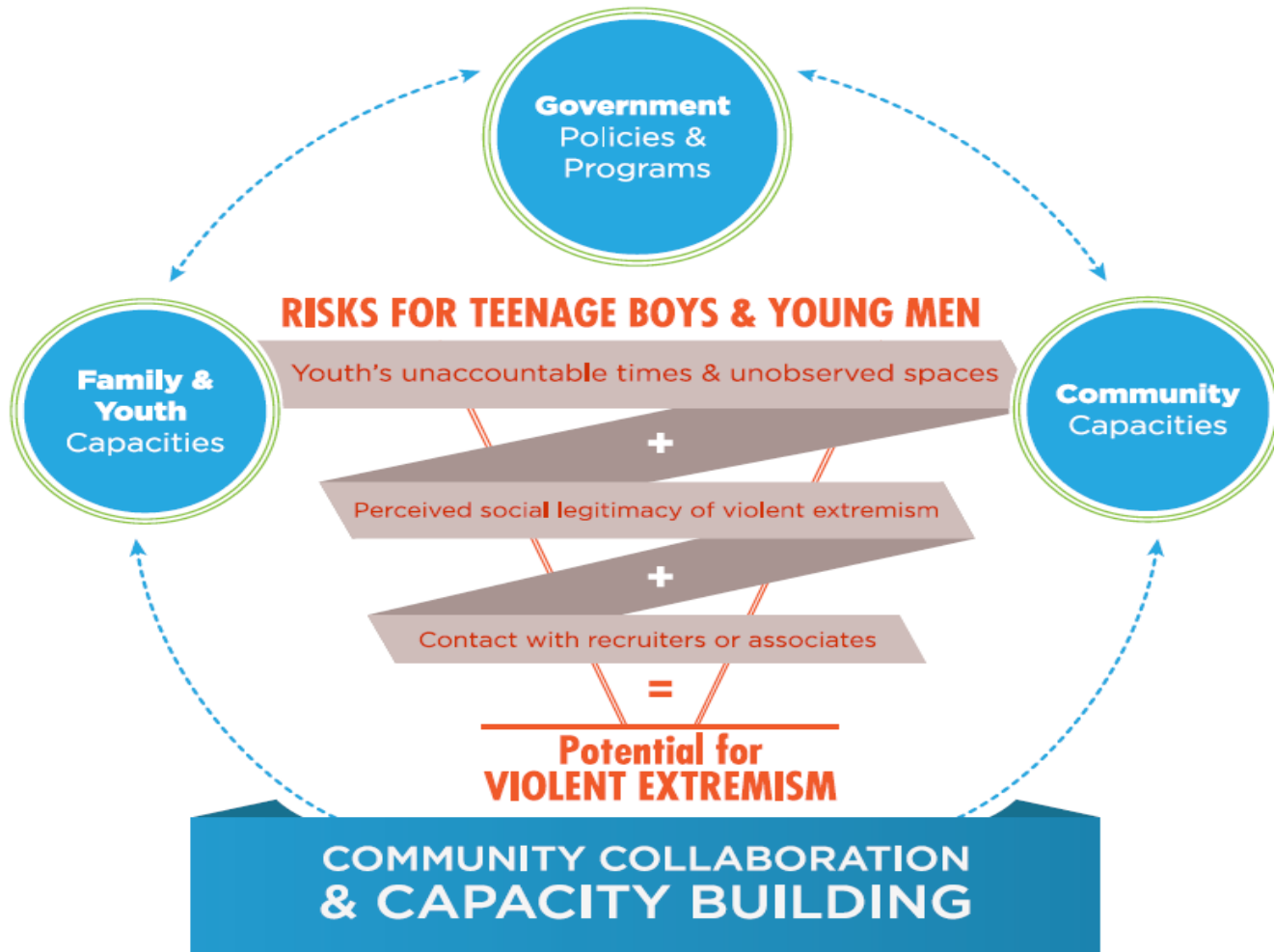
Cases per year – Lone actors



Terrorism in the U.S.: 1970-2014 (n = 2627)



Building Community Resilience to Violent Extremism



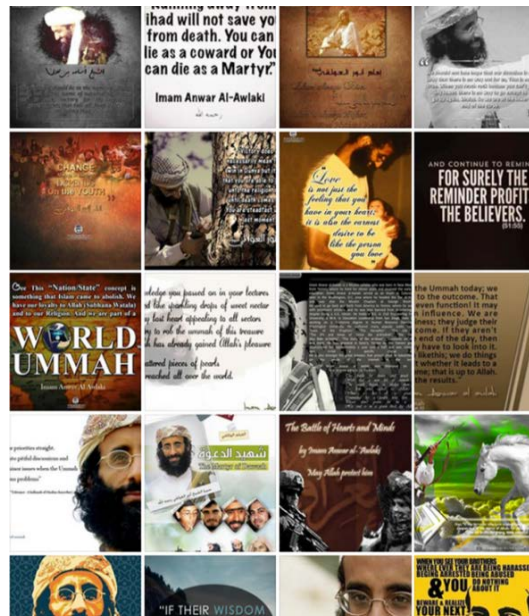
Reasons to Embrace CVE

- CVE pushes back on polarization
- CVE is pragmatic
- CVE addresses all-hazards
- CVE protects all communities
- Because Americans think it will work

Evolving Challenges



10 years ago
Intellectual Table-Setting



5 years ago
Emotional Appeals



Today
Blend of expression & behavior

William Braniff

Executive Director

START, University of Maryland

(301) 405-6600

braniff@start.umd.edu

www.start.umd.edu